

Applications for CES

- Anxiety associated with fear of storms, stress, separation, chronic pain or obsessive compulsive disorders
- Insomnia related to adrenal malfunction, cancer pain, and cognitive dysfunction
- Depression from loss or separation



CARE OF EQUIPMENT:

Alpha-Stim® devices are durable but it is important to take care of your equipment. Treat them as a medical device. Our patients will not tell us if they feel nothing so we need to take these simple steps to make certain they are getting the therapy we think we are delivering!

- If you are using them daily, check ear clips once a week. These can be tested by attaching them to your eyebrows. The microcurrent will be picked up by your eyes and you will see some flashing lights. This means the system is working.
- Pinch the clips to release them from the ears rather than pulling them by the connecting line.
- Do not store by wrapping the lines around the device. The wire inside is very fine and could break after repeated use in such a manner.
- Keep the device clean by using alcohol on the outer parts but be careful to not overdo it .
- When changing the pads, new ones will adhere better if you clean the ear clips with alcohol and dry them prior to application of a new pad. Do this at the end of a treatment so that the pads have ample time to set before the conducting solution* is applied.

* Use only Alpha Conducting Solution™. It is specially designed to allow smooth conduction of the microcurrent across the skin barriers.

Alpha-Stim® CES Therapy Applications for Animals



Guide for using Cranial Electrotherapy Stimulation

- *Efficacious therapy*
- *Easy to learn*
- *Can be administered in the clinic or at home*
- *Great for cases refractory or sensitive to conventional care*
- *Highly cost effective*

Integrative Veterinary Education, Inc.
Ava Frick, DVM

1825 Denmark Road / Union, MO 63084
www.avafrick.com

TREATING ANIMALS WITH ALPHA-STIM® CES (Cranial Electrotherapy Stimulation)

For Treating Pain: Combine with MET - Microcurrent Electrical Therapy

ASSESS THE PATIENT:

Take a visual, mental, and written record of the current status of the animal so that the effects of the therapy can be assessed. Note severity on a scale of 1-10. Once you have your analysis proceed to treatment.

GENERAL TREATMENT:

For animals with very thick fur it might be advantageous to shave a small spot on the outside surface of the ear. Clean the skin surface inside and out at the contact point using a cotton ball with alcohol. Apply 3-4 drops of Alpha Conducting Solution™ to the ear clip felt pads. Connect the lead to the device then attach the clips at the lower side of the ears. Turn it on and then set the intensity dial by gradually increasing it until the appropriate treatment level is reached. (See Unit Settings) Run for a minimum of 20 minutes or at least three minutes past relaxation.

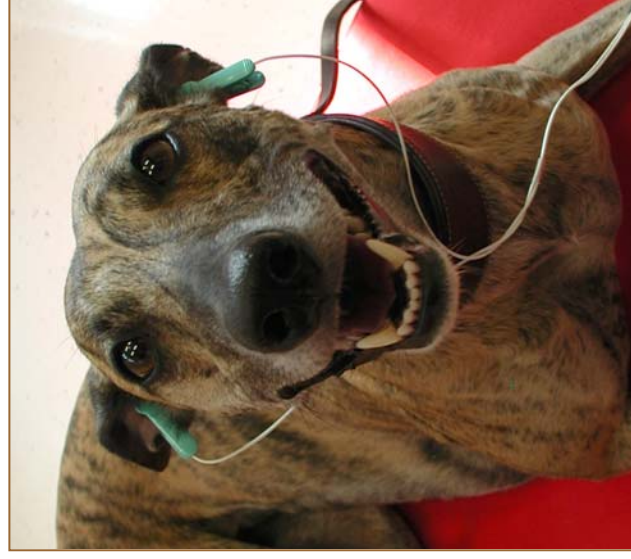
PATIENT MONITORING:

You may stop treatment when the specific symptom is gone or greatly reduced. Use behavioral changes, pain score, lameness evaluation and range of motion to assess improvement in animals. Treat as directed starting daily then reducing to every other day and then once to twice a week as needed. Wean patients off treatment slowly if possible by increasing the intervals between treatments.

CES might relax or cause dizziness that could not be easily detected in animals. Refrain from riding a horse or racing a dog immediately following application. Allow a 30-60 minute rest period before performing.

UNIT SETTINGS:

- **Frequency** is preset on the SCS unit at 0.5 HZ. When using the AS-100 unit check the slide dial to confirm that it is set at 0.5 Hz.
- **Current** is marked in 100 microampere increments starting with the number 1 on the dial. Always begin therapy with it set at zero. Gradually increase to the appropriate level over 20 seconds.
- **Cats: 0.5 to 1.0**
- **Dogs: 2.0 to 3.0**
- **Horses: 0.5 to 1.5**
- **Duration** of treatment varies with the severity of pain or anxiety. A general recommendation is 20 to 60 minutes once to twice a day for 2 weeks then daily to every other day for 2 more weeks or until condition is resolved.
- For other species settings or questions regarding Alpha-Stim® therapy in animals, contact Dr. Ava Frick.



This is a prescription medical device and should be used under the guidance of a licensed veterinarian.